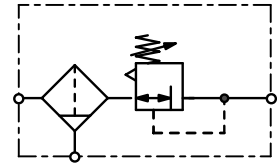


FILTER REGULATOR MADE OF BRASS UP TO 50 BAR

BM

Description	Filter pressure regulator made of solid brass, with bowl without sight glass. The control system is a membrane.		
Media	compressed air, non-corrosive gases or liquids		
Supply pressure	max. 50 bar (without drain)		
Adjustment	by black plastic knob at size G $\frac{1}{4}$		
Gauge port	G $\frac{1}{4}$ on both sides of the body, one screw plug supplied		
Filter element	50 μ m, optionally 5 μ m, made of stainless steel		
Bowl	stainless steel version without sight glass		
Drainage	screw plug as standard, optionally manual drain (max. 30 bar) or automatic drain (max. 16 bar)		
Temperature range	0 °C to 80 °C / 32 °F to 176 °F for FKM 0 °C to 130 °C / 32 °F to 266 °F for high temperature version for appropriately conditioned compressed air down to -20 °C / -4 °F or low temperature version down to -40 °C / -40 °F		
Material	Body: brass	Bowl: stainless steel 316L / material no. 1.4404	
	Diaphragm: NBR/Buna-N with PTFE coating	O-rings: FKM	
	Knob: plastic at sizes G $\frac{1}{4}$, brass at G $\frac{1}{2}$	Inner valve: brass and plastic (not at option X54)	



**G $\frac{1}{4}$ up to G $\frac{1}{2}$, max. 50 bar
-40 to 130 °C / -40 to 266 °F**

Dimensions			Bowl-	Flow	Connection	Order
A	B	C	Design	rate	thread	number
mm	mm	mm	made of	m 3 /h*1	G	

Brass filter regulator							with screw plug, relieving, without gauge, 50 μ m filter element supply pressure max. 50 bar, pressure range 0.5...8 bar	BM
64	220	123	stainless steel	0,17	84	1400	G $\frac{1}{4}$	BM-02
79	247	127	stainless steel	0,28	228	3800	G $\frac{1}{2}$	BM-04



BM-02



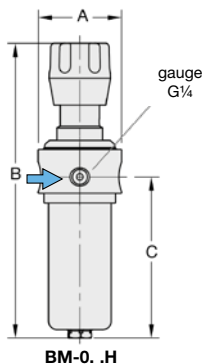
BM-04

Special options, add the appropriate letter

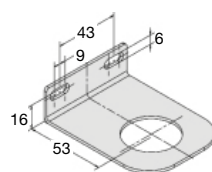
5 μ m filter element							BM- . . G
0.2... 3 bar range							BM- . . B
1 ...15 bar range							BM- . . D
manual drain			max. 30 bar				BM- . . H
automatic drain			made of stainless steel, max. 16 bar		for G $\frac{1}{4}$ (02) to G $\frac{1}{2}$		BM- . . R
non-relieving			without relieving function				BM- . . K
down to -40 °C / -40 °F			low temperature version				BM- . . X51
up to 130 °C / 266 °F			high temperature version				BM- . . X54
T-handle			instead of adjusting knob			for G $\frac{1}{4}$	BM- . . T
nitrogen	N $_2$: 07	carbon dioxide	CO $_2$: 03	argon	Ar:		BM- . . 05
helium	He: 09	hydrogen	H $_2$: 11	methane	CH $_4$:		BM- . . 13
oxygen	O $_2$: 15	propane	C $_3$ H $_8$: 16	nitrous oxide	N $_2$ O:		BM- . . 17
flange connection			see chapter for stainless steel devices / flanges				BM- . . F.

Accessories, enclosed

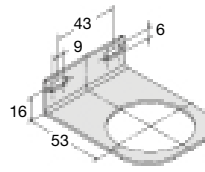
pressure gauge	Ø 50 mm, 0...*2 bar, G $\frac{1}{4}$	MA5002-... *2
gauge -40 °C/-40°F to 130 °C/266 °F	Ø . . mm, 0...*2 bar, G $\frac{1}{4}$	MS6302-... *2
mounting bracket	made of stainless steel for G $\frac{1}{4}$	BW35-01S
mounting nut		M35x1,5S
mounting bracket	made of stainless steel for G $\frac{1}{2}$	BW50-01S
mounting nut		M50x1,5S



BM-0. .H



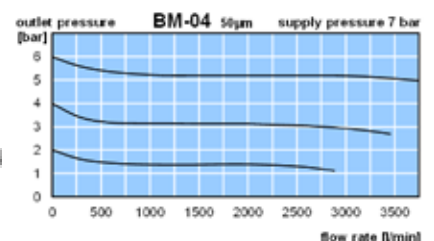
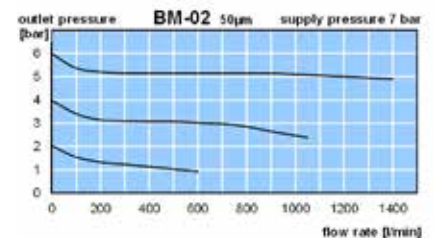
BW35-01S



BW50-01S

*1 at 7 bar supply pressure, 6 bar outlet pressure and 1 bar pressure drop

*2 04 = 0...4 bar, 10 = 0...10 bar, 16 = 0...16 bar



Extensions: see chapter for FRL service units
Gauges: see chapter for measuring devices
Spare parts: see separate spare parts list

PDF CAD
www.aircom.net



Order example:
BM-02